

ALONE AGAIN (NATURALLY)

AS RECORDED BY DON ELLIS

GILBERT O'SULLIVAN
ARRANGED BY MILCHO LEVIEV

FLUGELHORN $\text{♩} = 90$ 3

TRUMPET 3 HARMON (W/STEM) + WAH PEDAL (TIGHT UNISON W/GUITAR)

TROMBONE 1 3

TROMBONE 2 3

TENOR SAX 3

FLUTE 3

VIOLIN 3

VIOLONCELLO 3

KEYBOARDS 3

ELECTRIC GUITAR 3 (TIGHT UNISON W/TRUMPET)

ELECTRIC BASS 3

5 A

FLG.

TPT.

TBN.1

TBN.2

T. SAX.

FL.

VLN.

Vc.

KEYS. *BRIGHT PIANO*

GTR.

BASS.

8 *"PLAY SPARSELY"*
 GΔ7 G6 B- B-7b5 E7 A-7 A-7b5

11

FLG.

TPT.

TBN.1

TBN.2

T. SAX.

FL.

VLN.

Vc.

KEYS.

GTR.

BASS.

8

G G+5 3 G6 3 3 C#-7b5 F#7 B- B-7b5 E7b9 E7 A-

16

FLG.

TPT.

TBN.1

TBN.2

T. SAX.

FL.

VLN.

Vc.

KEYS.

GTR.

BASS.

OPEN / CLEAN

VOCAL

NAT - UR - LY - .

TO E.PIANO
"JAZZ CHORUS"

A-7b5 GΔ7 G6 B- E7 A- D7b9 G

21 8

FLG.

TPT.

TBN.1

TBN.2

T. SAX.

FL.

VLN.

Vc.

KEYS.

GTR.

8

BASS.

Light / Spacious
COMPING...

27

FLG.

TPT.

TBN.1

TBN.2

T. SAX.

FL.

VLN.

Vc.

KEYS.

GTR.

BASS.

G G+5 G6 C#-7b5 F#7 B- B-7b5 E7b9 E7 A- A-7b5

36

FLG.

TPT.

TBN.1

TBN.2

T. SAX.

FL.

VLN.

Vc.

KEYS.

GTR.

BASS.

DOUBLED (OPEN)

GΔ7 G6 B- E7 A- D7b9 G

GΔ7 G6 B- E7 A- D7b9 G

8 GΔ7 G6 B- E7 A- D7b9 G

50

FLG.

TPT.

TBN.1

TBN.2

T. SAX.

FL.

VLN.

Vc.

KEYS.

GTR.

BASS.

8 G6 C#-7b5 F#7 B- B-7b5 E7b9 E7 A- A-7b5

55

FLG. *RALL.*

TPT.

TBN.1

TBN.2

T. SAX.

FL.

VLN. *RALL.* *RUBATO* *2*

Vc. *RALL.* *RUBATO* *2*

KEYS.

GTR. *RALL.* *RUBATO*
 8 *B-* *E7* *A-* *D7b9* *G*

BASS. *RALL.* *RUBATO*
GΔ7 *G6* *B-* *E7* *A-* *D7b9* *G*

FLUGELHORN

ALONE AGAIN (NATURALLY)

AS RECORDED BY DON ELLIS

GILBERT O'SULLIVAN
ARRANGED BY MILCHO LEVIEV

♩ = 90

4

A

5

15

B

21

25

29

33

C

37

6



43

47

51

55

TROMBONE 1

ALONE AGAIN (NATURALLY)

AS RECORDED BY DON ELLIS

GILBERT O'SULLIVAN
ARRANGED BY MILCHO LEVIEV

♩ = 90

4

5

A

16

21

B

16

37

C

SOLO

43

D

16

TROMBONE 2

ALONE AGAIN (NATURALLY)

AS RECORDED BY DON ELLIS

GILBERT O'SULLIVAN
ARRANGED BY MILCHO LEVIEV

♩ = 90

4

5 **A**

16

21 **B**

16

37 **C**

2

43 **D**

16

TENOR SAX

ALONE AGAIN (NATURALLY)

AS RECORDED BY DON ELLIS

GILBERT O'SULLIVAN
ARRANGED BY MILCHO LEVIEV

♩ = 90

4

A

5

16

B

21

16

C DOUBLED. PLAYED TIGHTLY W/TRUMPETS

37

mi

39

2

D

43

16

FLUTE

ALONE AGAIN (NATURALLY)

AS RECORDED BY DON ELLIS

GILBERT O'SULLIVAN
ARRANGED BY MILCHO LEVIEV

♩ = 90

4

5

A

16

21

B

25

29

33

2

37

C

2

SOLO

43

D

16

VIOLONCELLO

ALONE AGAIN (NATURALLY)

AS RECORDED BY DON ELLIS

GILBERT O'SULLIVAN
ARRANGED BY MILCHO LEVIEV

♩ = 90

4

5 **A** 16

21 **B**

25

29

33

37 **C** 2

43 **D** 13

56

RALL. -----

RUBATO

2

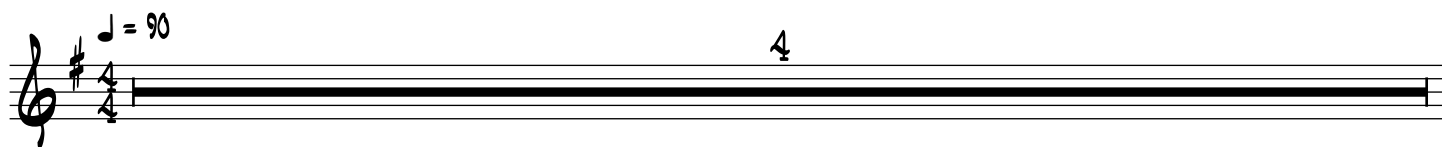
KEYBOARDS

ALONE AGAIN (NATURALLY)

AS RECORDED BY DON ELLIS

GILBERT O'SULLIVAN
ARRANGED BY MILCHO LEVIEV

♩ = 90



A

5 BRIGHT PIANO



9



17



LIGHT / SPACIOUS
COMPING...

B

21 GΔ7 G6 B- B-7b5 E7



25 A-7 A-7b5 G G+5 G6 C#-7b5 F#7



29 B- B-7b5 E7b9 E7 A- A-7b5



33 GΔ7 G6 B- E7 A- D7b9 G



37 C B \flat F A-7 \flat 5 D7 \flat 9

40 B \flat E-7 \flat 5 A A-7 D7 \flat 9

43 D 16

ELECTRIC GUITAR

ALONE AGAIN (NATURALLY)

AS RECORDED BY DON ELLIS

GILBERT O'SULLIVAN

ARRANGED BY MILCHO LEVIEV

♩ = 90

3

(TIGHT UNISON W/ TRUMPET)

5

A

8

11

14

ALISS.

17

21 **B** GΔ7 G6 B- B-7b5 E7

25 A-7 A-7b5 G G+5 G6 C#-7b5 F#7

29 B- B-7b5 E7b9 E7 A- A-7b5

33 GΔ7 G6 B- E7 A- D7b9 G

37 **C** Bb F A-7b5 D7b9

40 Bb E-7b5 A A-7 D7b9

43 **D** 13

56 A- D7b9 G

RALL. ----- RUBATO

ELECTRIC BASS

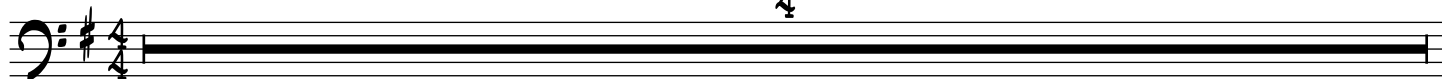
ALONE AGAIN (NATURALLY)

AS RECORDED BY DON ELLIS

GILBERT O'SULLIVAN
ARRANGED BY MILCHO LEVIEV

♩ = 90

4



5 **A** "PLAY SPARSELY"
GΔ7 G6 B- B-7b5 E7

9 A-7 A-7b5 G G+5 G6 C#-7b5 F#7

13 B- B-7b5 E7b9 E7 A- A-7b5

17 GΔ7 G6 B- E7 A- D7b9 G

21 **B** NO MORE MR NICE GUY...
GΔ7 G6 B- B-7b5 E7

25 A-7 A-7b5 G G+5 G6 C#-7b5 F#7

29 B- B-7b5 E7b9 E7 A- A-7b5

33 GΔ7 G6 B- E7 A- D7b9 G

37 **C** B \flat F A-7 \flat 5 D7 \flat 9

40 B \flat E-7 \flat 5 A A-7 D7 \flat 9

43 **D** G Δ 7 G \flat B- B-7 \flat 5 E7

47 A-7 A-7 \flat 5 G G+5 G \flat C#-7 \flat 5 F#7

51 B- B-7 \flat 5 E7 \flat 9 E7 A- A-7 \flat 5

55 G Δ 7 G \flat B- E7 A- D7 \flat 9 G

RALL. ----- RUBATO